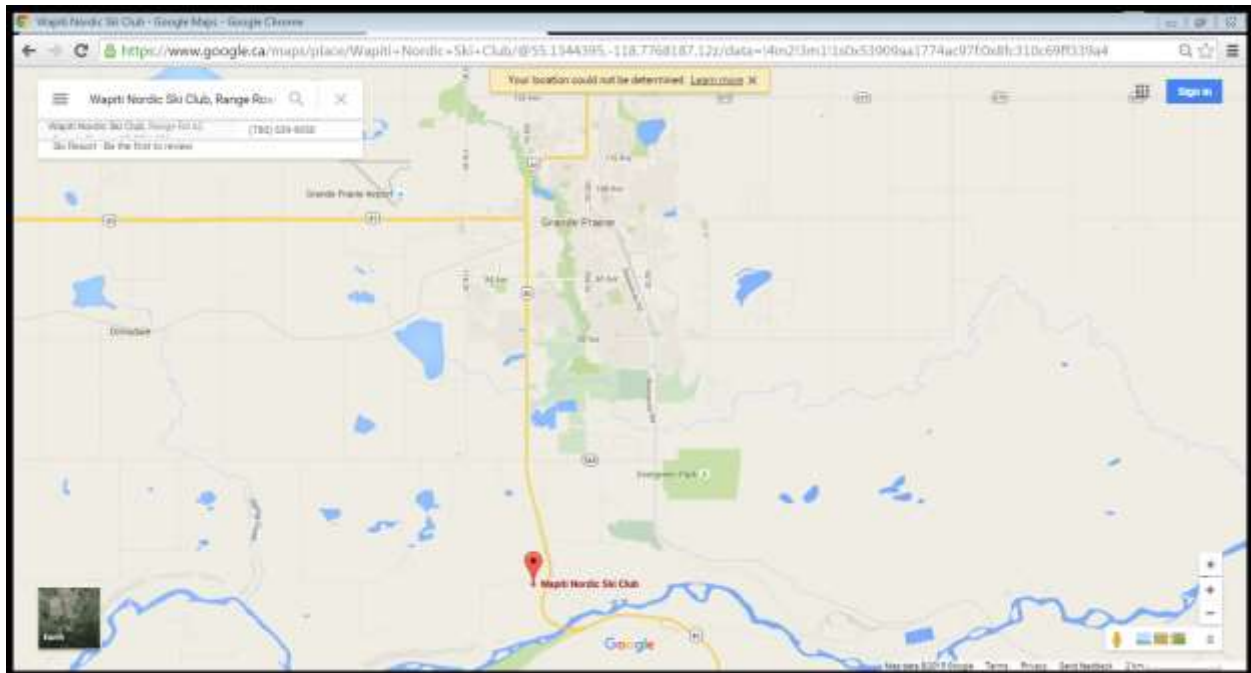


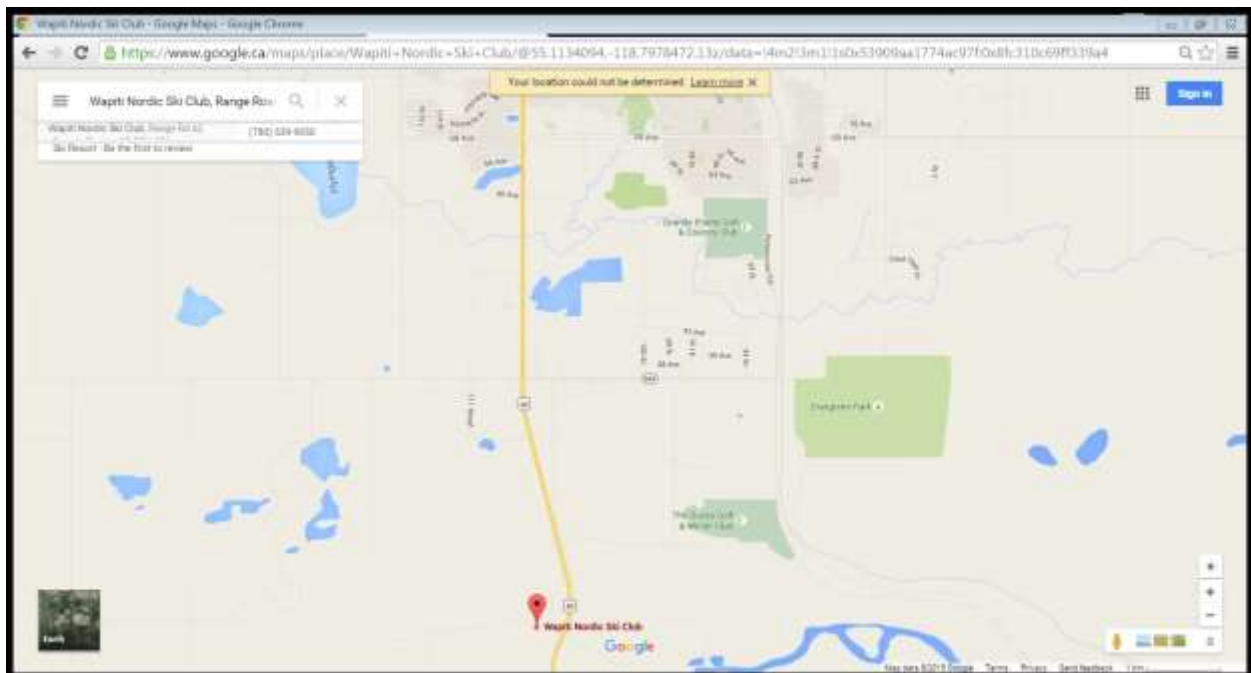
Maps to the Wapiti Nordic Ski Trails from Grande Prairie

From Grande Prairie, travel south on Wapiti Road (Highway 40) past the city limits, through the lights at Hwy 668/Township Rd 710, until you see Camp Tamarack on your left. Just past Camp Tamarack, turn right off Highway 40 on Township Rd 704A, travel 50m until you get to the T-intersection. Turn left and travel about 1.5 kms on Range Road 62/Township Rd 704. The Biathlon Stadium will be on your right at the top of the hill, about 200m beyond the Steve Cooper Lodge.

Map 1 – Grande Prairie to Wapiti Nordic



Map 2 – South of Grande Prairie



Maps to the Wapiti Nordic Ski Trails from Grande Prairie

Map 3 – Immediate Vicinity of Wapiti Nordic

